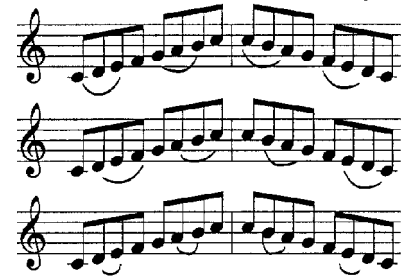
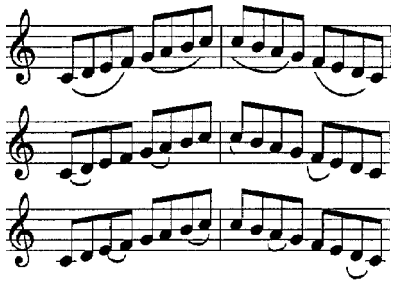


Natural Minor Scales



1. Vary articulations, -- slurring, tonguing and combinations, but do not change within one line.
2. Use medium dynamic levels throughout.
3. Play evenly at one consistent tempo. Use the metronome frequently. Play faster tempos only after evenness is attained at slower tempos.



Beginning on page 106.

Ends on page 107.

